

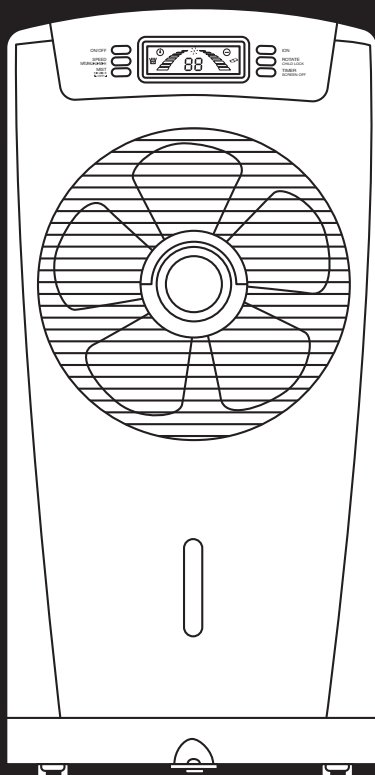


**Important!**

Read the entire instruction manual carefully and make sure that you fully understand it before you use the equipment. Keep the manual for future reference.

ENGLISH

# Misting fan



ART.NO      MODEL  
18-1257    WCF-06R

Ver. 20150602  
Original instructions

# Misting fan

**ART.NO 18-1257    MODEL WCF-06R**

Please read the entire instruction manual before using the product and then save it for future reference. We reserve the right for any errors in text or images and any necessary changes made to technical data. In the event of technical problems or other queries, please contact our Customer Services (see address details on the back).

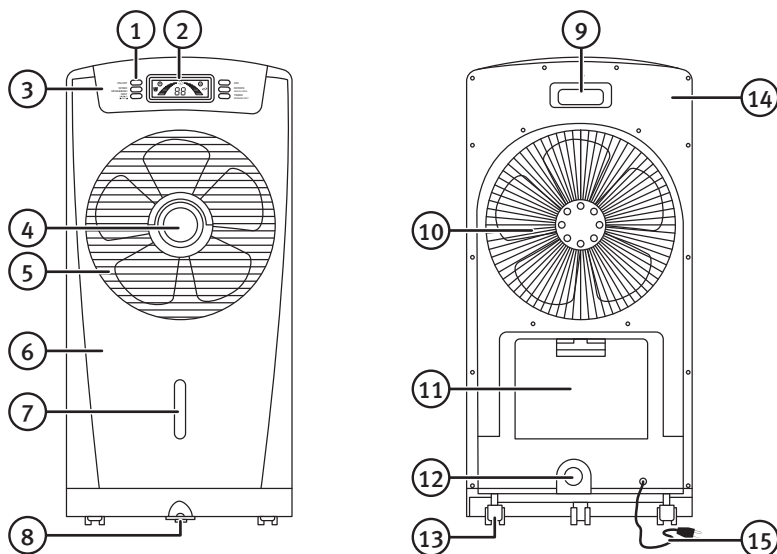
## Safety

- Never use the product if its mains lead, plug or any other part is damaged or is not working properly.
- Never attempt to repair or modify the product in any way.
- The product is designed exclusively for normal domestic use.
- The product is only intended for indoor use in a dry, clean environment. Do not place the product in such a way as it risks falling into water or any other type of liquid.
- Always unplug the product from the power point when it is not in use.
- Never leave children unsupervised in the vicinity of the product.
- Never expose the product to water or other liquids.
- Operating temperature: -10 to 40 °C.
- Do not turn on the power before the product is completely assembled.  
The product must only be used in the vertically upright position or slightly inclined and must never be used in the horizontal position.
- Make sure that no foreign objects penetrate the product.
- Never turn the product off by pulling the plug out of the wall socket. Turn off the product using the power button and then unplug it from the wall socket.
- Make sure that the product is completely assembled before using it for the first time.
- Never use the product in areas where explosive gases or substances are stored.
- This product can be used by children aged from 8 years and above if they have been given supervision or instruction concerning use of the product in a safe way and understand the hazards involved. Cleaning and user maintenance shall not be made by children unless they are older than 8 and supervised. Keep the product and its mains lead out of reach of children under the age of 8.
- The product may be used by persons with reduced physical, sensory or mental capabilities or persons with a lack of experience or knowledge which could jeopardize their safety, provided they have been instructed in the safe operation of the product and understand the hazards involved. Never let children play with the product.

## Product description

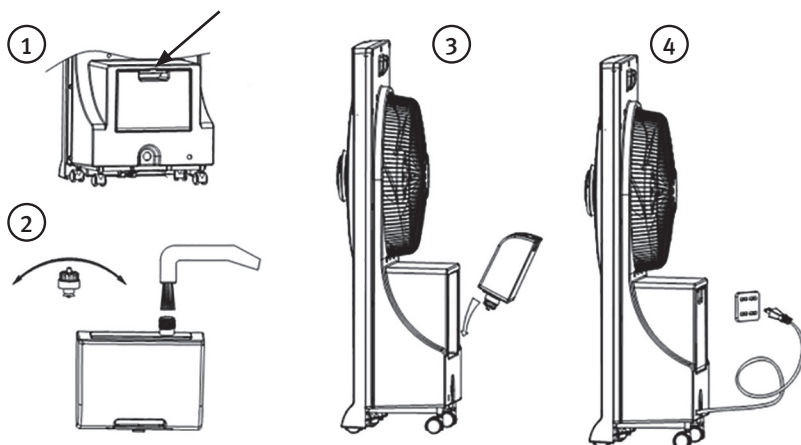
Quiet-running misting fan with ionisation feature. Cooling mist for maximum comfort. Ionisation clean air function. Fan and mister can be run separately. 3-speed fan, timer, rotating fan louvres, display and empty water reservoir alarm. Controlled via the integrated control panel or remote control. 2.5 l water reservoir. Rated misting time: 8 hours.

## Buttons and functions



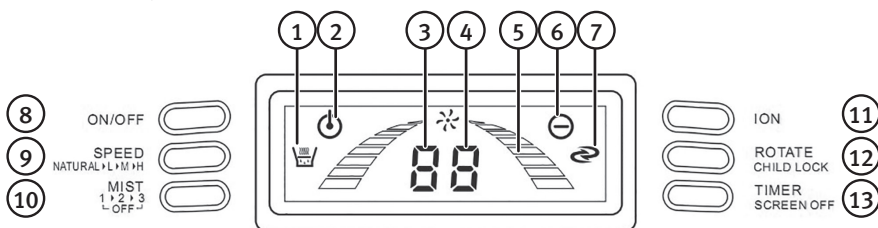
1. [ON/OFF] Power button
2. Display
3. Control panel
4. Fan/mister louver knob
5. Fan grille
6. Front cover
7. Water level gauge
8. Tip-over switch
9. Handle
10. Rear grille
11. Water reservoir
12. Drain plug
13. Wheels
14. Rear cover
15. Mains lead

## Use



1. Remove the water reservoir (11) by pressing down on the catch and pulling it out.
2. Unscrew the reservoir cap and fill it with water.
3. Screw the cap back into place and reinsert the water reservoir. Always place the fan on a flat, stable surface.
4. Plug the mains lead into a wall socket. A beep will be heard and the display will turn on.
5. Press [ON/OFF] to turn the fan on.

## Control panel



### Display symbols

1. Mist icon
2. Fan on icon
3. Fan speed icon
4. Timer display
5. Fan function icon
6. Ionising function icon
7. Rotation icon

### Buttons

8. [ON/OFF] Power switch
9. [SPEED] Fan speed
10. [MIST] Misting function
11. [ION] Ionising function
12. [ROTATE] Rotation/child lock
13. [TIMER] Timer/display off

### [ON/OFF]

Press the [ON/OFF] button to turn on the fan and display. The fan speed starts out at level 1. In this mode the fan will pulse and be on for 2 sec and off for 3 sec in a sequentially repetitive pattern. Press the [ON/OFF] button again to turn off.

### [SPEED]

Press the [SPEED] button to vary the fan speed between the **0-1-2-3-4** speed settings.

### [MIST]

Push [OK] to start the misting function. The misting icon will then appear on the display. There are 4 misting modes. Press the [MIST] button to toggle between:

1. On
2. Sequentially repetitive pattern: On for 3 min and off for 5 min.
3. Sequentially repetitive pattern: On for 5 min and off for 10 min.
4. Off

**Note:** The misting function works independently from the fan so that it can be used as a humidifier.

### [ION]

Push [ION] to start the ionising function. The ionising icon will appear on the display. Press the [ION] button again to turn off.

### [ROTATE]

With the fan on, press the [ROTATE] button to start the louvre rotation function. The rotation icon will appear on the display. Press the [ROTATE] button again to turn off. This function only works while the fan is on.

**Note:** Press the [ROTATE] button for approx 3 seconds to activate the child lock function. Press the [ROTATE] button again for approx 3 seconds to deactivate the child lock function.

### [TIMER]

1. With the fan on, press the [TIMER] button to set the timer. The timer display will show both "H" and "1".
2. Press the [TIMER] button to set the hours (1–9 h) and to turn off.
3. If you use the fan without the timer, you must then turn it off manually.

**Note:** Pressing the [TIMER] button for approx 3 sec will turn off the display. Pressing and holding in the [TIMER] button again will turn the display on.

## Remote control

The remote control has the same functions as the control panel. The only exception is the child lock function and display. These must be turned on/off using the control panel.

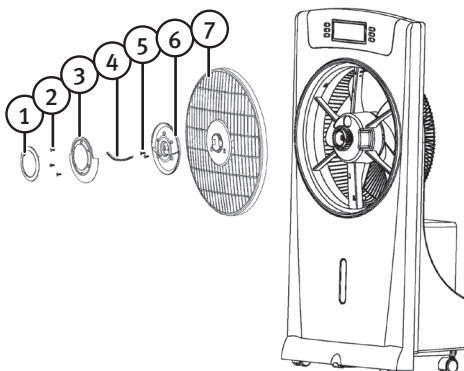
- The remote control has a 5 m range with a 45° working angle.
- Check the batteries if your remote does not seem to function correctly.
- Never let children play with the remote.

## Care and maintenance

- Make sure that the fan is turned off and unplugged before cleaning.
- Clean the misting fan every 2 weeks. The water reservoir should be cleaned every month.

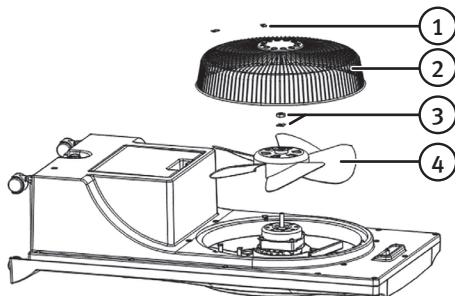
### Cleaning the fan grilles

1. Pull out the outer retaining ring (1).  
Use a knife or other appropriate tool to insert into the groove to pry the ring loose.
2. Unscrew the three screws (2) holding the inner retaining ring (3).
3. Pull out the inner retaining ring (3) and the rubber seal (4).
4. Unscrew the two screws (5) holding the grille's retaining plate (6).
5. Remove the grille retaining plate (6).
6. Remove the fan grille (7) by pulling it out.



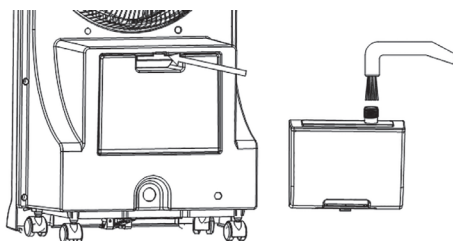
### Cleaning the rear fan grill and fan blades

1. Unscrew the two screws (1) holding the fan grille (2).
2. Remove the fan grille (2).
3. Remove the nut and washer (3) from the motor spindle.
4. Remove the fan blade assembly (4).
5. Clean all parts and let them dry thoroughly before refitting them in reverse order.



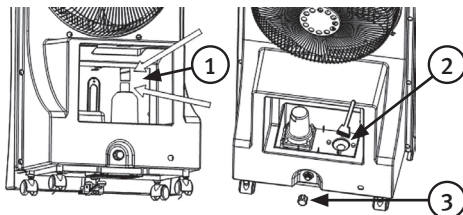
### Cleaning the water reservoir

1. Remove the water reservoir and empty it.
2. Refill with fresh clean water and shake the tank thoroughly.
3. Empty the tank and let it dry thoroughly before putting it back in place.



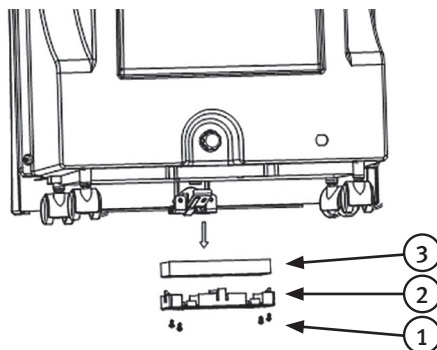
## Cleaning the misting chamber

1. Remove the water reservoir.
2. Pull the misting hose from its coupling (1).
3. Pull the mister up and out to remove.
4. Rinse the mister with clean water and wipe dry using a clean cloth.
5. Clean the misting chamber (2) using a fine bristle brush and a little water.
6. Drain any excess water by removing the drain plug (3).
7. Wipe the chamber clean using a clean cloth.



## Cleaning the filter

1. Unscrew the four screws (1) holding the filter cartridge.
2. Remove the filter (3) from its cartridge (4) and blow the filter clean of any dust and debris.
3. Refit the parts in the reverse order.
4. Clean the misting chamber (2) using a fine bristle brush and a little water.
5. Unplug the drain plug (3) to empty the chamber of any excess water.
6. Wipe the chamber clean using a clean cloth.



## Clean the exterior

Wipe the exterior clean using a soft, damp cloth. Never use solvents or abrasive cleaning agents.

## Disposal

This product should be disposed of in accordance with local regulations. If you are unsure how to proceed, contact your local council.

## Specifications

<b>Power supply</b>	240 V/50 Hz
<b>Size</b>	390 × 250 × 790 mm
<b>Wattage</b>	90 W
<b>Misting power output</b>	30 W
<b>Water reservoir capacity</b>	2.5 l
<b>Misting volume</b>	130 ml/h

## SVERIGE

---

KUNDTJÄNST      Tel: 0247/445 00  
Fax: 0247/445 09  
E-post: kundservice@clasohlson.se

INTERNET      www.clasohlson.se

BREV      Clas Ohlson AB, 793 85 INSJÖN

## NORGE

---

KUNDESENTER      Tlf.: 23 21 40 00  
Faks: 23 21 40 80  
E-post: kundesenter@clasohlson.no

INTERNETT      www.clasohlson.no

POST      Clas Ohlson AS, Postboks 485 Sentrum, 0105 OSLO

## SUOMI

---

ASIAKASPALVELU      Puh.: 020 111 2222  
Sähköposti: asiakaspalvelu@clasohlson.fi

INTERNET      www.clasohlson.fi

OSOITE      Clas Ohlson Oy, Maistraatinportti 4 A, 00240 Helsinki

## UNITED KINGDOM

---

CUSTOMER SERVICE      Contact number: 020 8247 9300  
E-mail: customerservice@clasohlson.co.uk

INTERNET      www.clasohlson.co.uk

POSTAL      10 – 13 Market Place  
Kingston Upon Thames  
Surrey  
KT1 1JZ

## DEUTSCHLAND

---

KUNDENSERVICE      Unsere Homepage [www.clasohlson.de](http://www.clasohlson.de) besuchen  
und auf Kundenservice klicken.