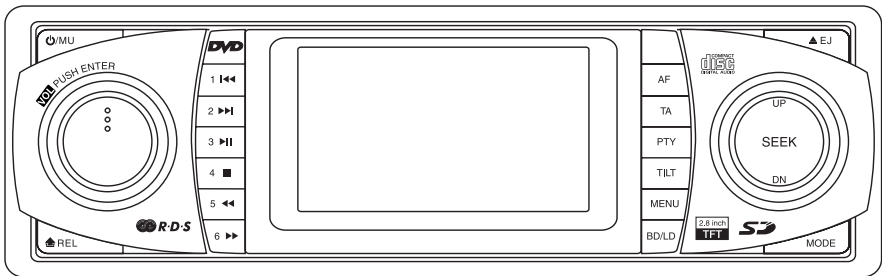


DENVER[®]

CAT-120



INSTRUCTION MANUAL

Car Stereo
DVD/SVCD/VCD/CD/MP3/MP4 Player
with PLL FM Stereo Radio
Radio Data System
2.8 Inch TFT-LCD
SD/MMC Card Input
Slide Down/Detachable Front Panel

BEFORE YOU BEGIN

PRECAUTIONS:

CAUTION:

USE OF CONTROLS OR ADJUSTMENT OR PERFORMANCE OF PROCEDURES OTHER THAN THOSE SPECIFIED HEREIN MAY RESULT IN HAZARDOUS RADIATION EXPOSURE.

THE USE OF OPTICAL INSTRUMENTS WITH THIS PRODUCT WILL INCREASE EYE HAZARD.

- Keep this manual handy as a reference for operating procedures and precautions.
- Always keep the volume low enough so you can hear sounds outside of the car.
- Protect this product from moisture.
- If the battery is disconnected or discharged, the preset memory will be erased and must be reprogrammed.

FEATURES:

DVD video playback

It is possible to play back DVD video, DVD+-R, DVD+-RW and DVD+-DL.

Video CDs featuring PBC compatibility

It is possible to play back Video CDs featuring PBC (playback control).

CD playback

Music CD/CD-R/CD-RW playback is possible.

MP3 file playback

It is possible to play back MP3 files recorded on CD-ROM/CD-R/CD-RW.

MP4 file playback

It is possible to play back MP4 files.

PAL/NTSC compatibility

This unit is PAL/NTSC system compatible. When connecting other components to this unit, be sure components are compatible with the same video system or else images will not be correctly reproduced.

Multi-audio

You can switch between multiple audio systems recorded on a DVD as desired.

Multi-subtitle

You can switch between multiple subtitle languages recorded on a DVD as desired.

Multi-angle

You can switch between multiple viewing angles of a scene recorded on a DVD as desired.

When an operation is prohibited

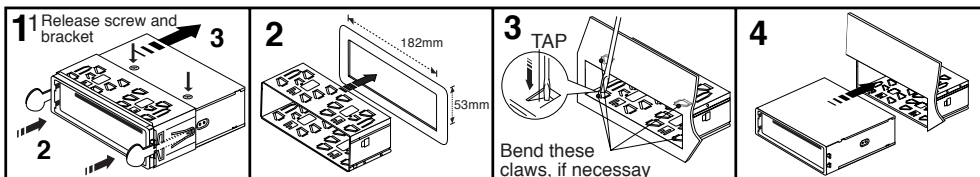
When you are watching a DVD and attempt to perform an operation, it may not be performed by the programming on the disc. When this happens, this unit indicates on the screen.

INSTALLATION

PRECAUTIONS

- Choose the mounting location carefully so that the unit will not interfere with the normal driving functions of the driver.
- Avoid installing the unit where it would be subject to high temperatures, such as from direct sunlight or hot air from the heater, or where it would be subject to dust, dirt or excessive vibration.
- Use only the supplied mounting hardware for a safe and secure installation.
- Be sure to remove the front panel before installing the unit.

NOTE : Inclination angle for car radio installation must not exceed 30° otherwise the front panel will not open.



NOTE: Keep the release key in the safe place as you may need it in future to remove the unit from the car.

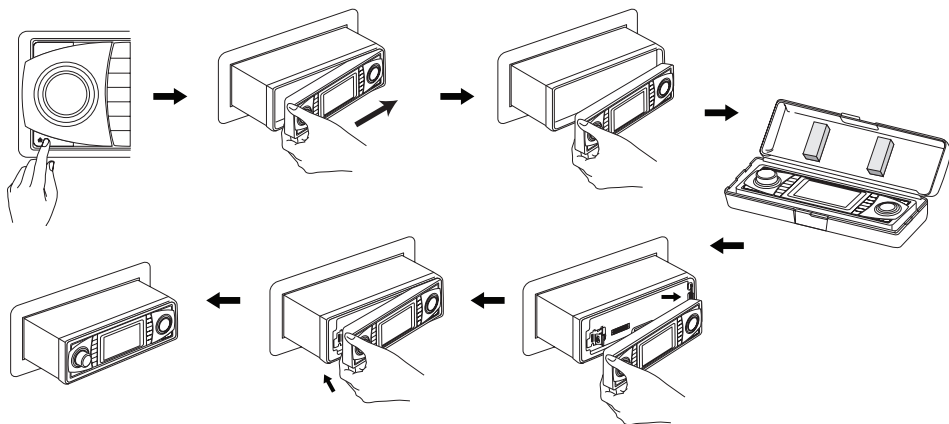
Detaching and attaching the front panel

The front panel of this unit can be detached in order to prevent the unit from being stolen.

FOLDING DOWN AND DETACHING/ATTACHING THE FRONT PANEL

Before detaching the front panel, be sure to press the  button (1) OFF first.

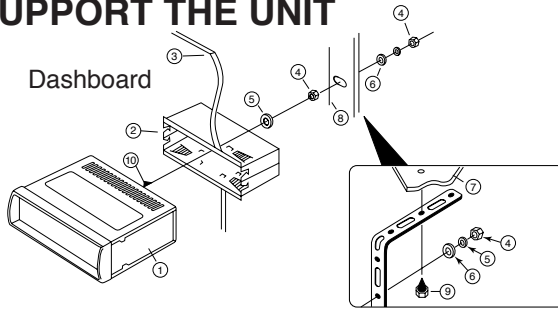
Then press the  button and detach the panel by pulling it towards you as illustrated.



Notes:

- Do not press the front panel hard against the unit when attaching it. It can be easily attached by pressing it lightly against the unit.
- When you carry the front panel with you, put it in the supplied front panel case.
- Do not press hard or give excessive pressure to the display window of the front panel when attaching it to the unit.

TO SUPPORT THE UNIT



1. UNIT
2. RELEASE CASE
3. DASH BOARD
4. HEX NUT
5. LOCK WASHER
6. PLAIN WASHER
7. CAR BODY
8. REAR SUPPORT STRAP
9. TAPPING SCREW
10. M5 X 15 HEX BOLT

WIRE CONNECTION

IN / OUT CONNECTOR

DVD Audio Out (GRAY) Rear : White (L) Red (R)

Connect this wire to rear seat A/V monitor system to enjoy DVD movie

Audio Out (Front): White (L) Red (R)

Audio Out (Rear): White (L) Red (R)

Audio Line In : White (L) Red (R)

Video Out (Yellow) : Yellow (Plug)

Connect to external A/V system to display

Video In (Black) : Yellow (Plug)

Connect to external Video equipment

Rear camera In (Black) : Blue (Plug)

Connect to rear camera output

CONTROL WIRE

Parking (Gray) : Connect this wire to car hand brake system

Tel mute (Black) : Connect to mobile phone unit

When receiving calls, audio sound will be muted.

Rear camera (Red) : Connect to back rear camera

During back gear condition, this wire should be connected to high voltage.

DRIVING WITHOUT VIDEO DISPLAY

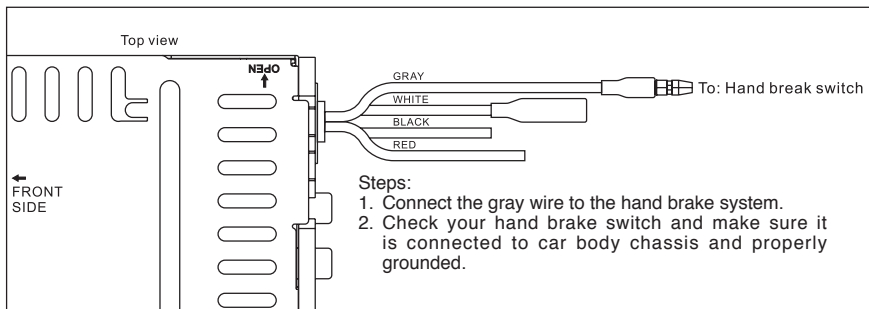
Follow the installation below so when the car is in motion, no video will come out from the LCD screen. Only sound can be heard from speaker.

Note:

- Only sound can be heard when car is in motion.
- Refer and follow your country's law regarding driving with video.

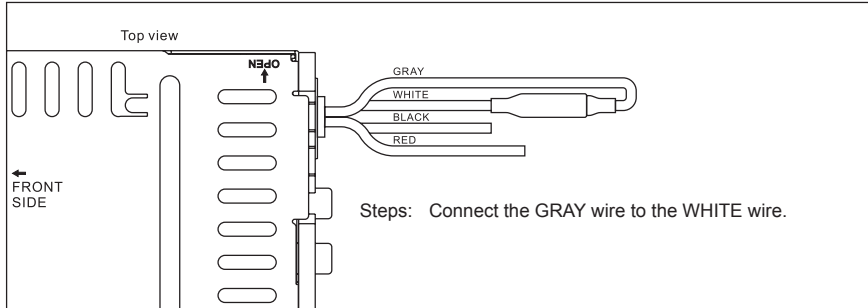
Caution:

- Do not attempt to install it by yourself if the instruction is not clear to you. Consult you dealer concerning the installation procedures.



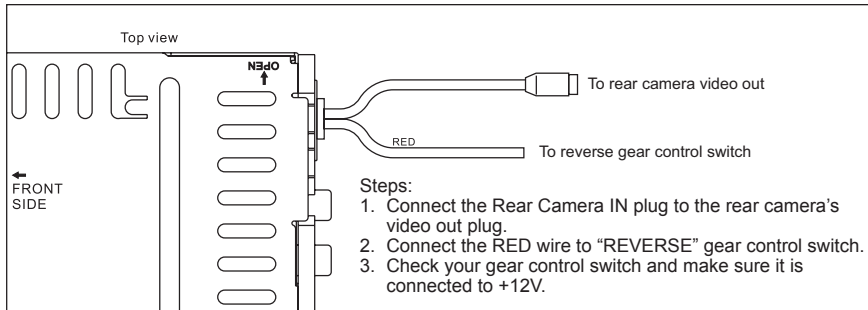
DRIVING WITH VIDEO DISPLAY

By following the installation below, video will always be shown on LCD screen no matter the car is in motion or not.



INSTALLING REAR CAMERA FOR PARKING/REVERSE MOTION

You can install an separate camera at the car rear end so when doing parking or reverse motion, the unit will automatically switch the video to the rear camera to guide the driver.



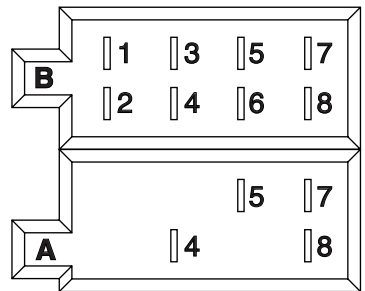
CONNECTOR A

4. MEMORY +12V
5. AUTO ANTENNA OUTPUT
7. +12V (TO IGNITION KEY)
8. GROUND

NOTE: (connector A no. 7) must be connected by car ignition key in order to avoid that car battery becomes weak when the car will be not used for long period.

CONNECTOR B

1. REAR RIGHT SPEAKER (+)
2. REAR RIGHT SPEAKER (-)
3. FRONT RIGHT SPEAKER (+)
4. FRONT RIGHT SPEAKER (-)
5. FRONT LEFT SPEAKER (+)
6. FRONT LEFT SPEAKER (-)
7. REAR LEFT SPEAKER (+)
8. REAR LEFT SPEAKER (-)



Maintenance

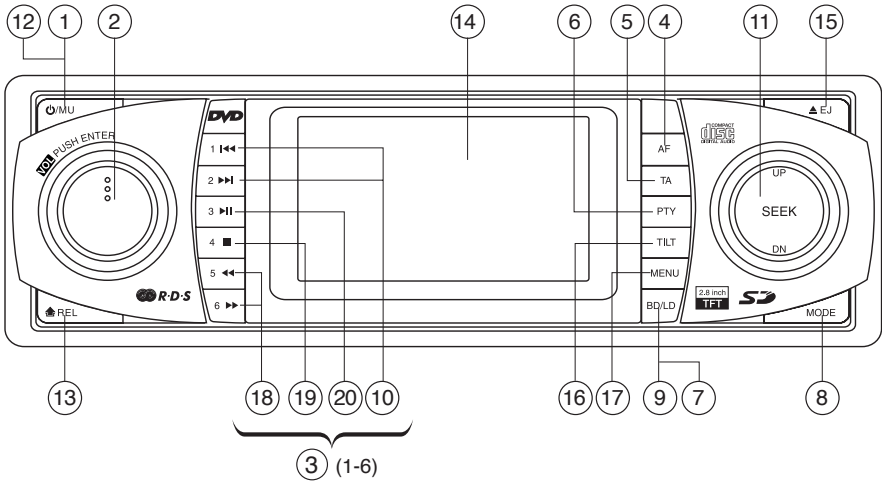
FUSE REPLACEMENT




If the fuse blows, check the power connection and replace the fuse. If the fuse blows again after the replacement, there may be an internal malfunction. In this case, consult your nearest repairing center.

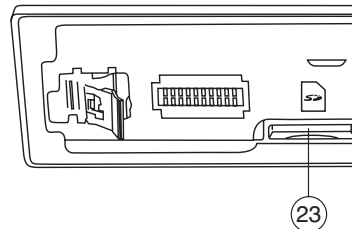
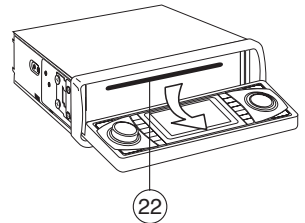
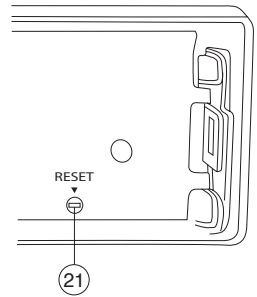
Warning

Use the specified amperage fuse for each lead. Use of a higher amperage fuse may cause serious damage.

Locations of Parts (Main unit)

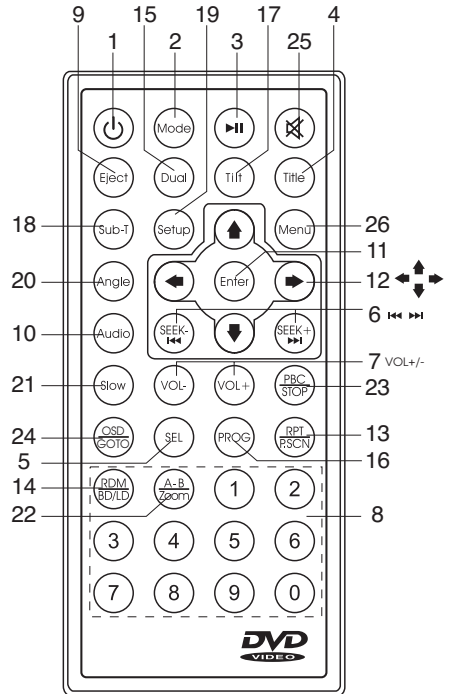


1. POWER ON/OFF () / MUTE
2. SELECT FUNCTION BUTTON
3. PRESET STATIONS (1,2,3,4,5,6)
4. 'AF' FUNCTION BUTTON (ALTERNATIVE FREQUENCIES)
5. 'TA' FUNCTION BUTTON (TRAFFIC ANNOUNCEMENT)
6. 'PTY' FUNCTION (PROGRAM TYPE)
7. LOUDNESS BUTTON (LD)
8. MODE BUTTON (MODE)
9. BAND BUTTON (BD)
10. CD TRACK / SEARCH BUTTON
11. AUTO SEEK TUNING
12. MUTE BUTTON (MU)
13. PANEL RELEASE BUTTON ()
14. TFT-LCD DISPLAY
15. CD EJECT BUTTON ()
16. TILT BUTTON
17. MENU BUTTON
18. FAST FORWARD / FAST REVERSE
19. STOP BUTTON
20. PLAY/PAUSE BUTTON
21. RESET BUTTON
22. CD SLOT
23. SD/MMC CARD SLOT



Locations of Parts (Remote Control)

1. POWER ON/OFF
2. MODE
3. PLAY/PAUSE
4. TITLE
5. SELECT
6. SEEK+/SEEK-
7. VOL +/VOL-
8. KEYPAD
9. EJECT
10. AUDIO
11. ENTER
12. NAVIGATION
13. AUTO SEEK / PRESET SCAN / REPEAT
14. RANDOM / BAND / LOUD
15. DUAL
16. PROGRAM
17. TILT
18. SUBTITLE
19. SETUP
20. ANGLE
21. SLOW MOTION
22. ZOOM / A-B REPEAT
23. PLAYBACK CONTROL / STOP
24. ON SCREEN DISPLAY / GOTO
25. MUTE
26. MAIN MENU

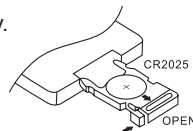


Use and care of the remote control

Installing the battery

Slide the tray out on the back of the remote control and insert the battery with the (+) and minus (-) poles pointing in the proper direction.

- When use for the first time, pull out the film protruding the tray.



CAUTIONS

- Remove the battery if the remote control is not used for a month or longer.
- Do not recharge, disassemble, heat or dispose the battery on fire.
- Do not store the battery with metallic materials.
- In the event of battery leakage, wipe the remote control completely clean and install a new battery
- When disposing of used batteries, please comply with government regulations or environmental public institution's rule that apply in your country/area.
- Always check carefully that you are loading the battery with plus (+) and minus (-) poles facing the proper directions.

Using the remote control

Point the remote control in the direction of the front panel to operate.

IMPORTANT

- Do not store the remote control in high temperatures or direct sunlight.
- Do not let the remote control fall onto the floor, where it may become jammed under the brake or accelerator pedal.

GENERAL OPERATIONS

Turning the unit ON/OFF (⏻)

Press any button to turn on the unit. To turn off, press and hold “⏻” button.

Selecting a source (MODE)

Press **MODE** repeatedly to switch between TUNER, AUX, SD/MMC and CD/DVD mode.

Loading a Disc

1. Press **EJ** to open the front panel
2. Insert a disc into the disc loading slot

Ejecting a Disc

Press **EJ** button to eject disc

Adjusting Volume

- Head Unit: Rotate **VOL** knob right or left to increase or decrease volume.
- Remote Control: Press **VOL+** or **VOL-** to increase or decrease volume

Mute Button

- Head Unit: Press **MU** button to mute the sound at once. Press again to return to previous volume level.
- Remote Control: Press **⏻** button.

Loud Button

Press and hold **LD** button to turn on/off LOUD feature.

Tilt

- Tilt feature allows you to control the viewing angles of the screen.
- Press **TILT** button repeatedly to choose the desired tilt angle.

Reset

Reset button is placed on the housing. The reset button is to be activated for the following reason:

- Initial installation of the unit when all wiring is completed.
- All the function button does not operate.
- Error symbol on the display.

MENU SETTINGS

Note: Press **MENU** repeatedly to exit the settings or leave it for few seconds and it will automatically return to normal mode.

AUDIO SETTINGS

1. Press **MENU**. Select **AUDIO** and press **VOL** knob.
2. Rotate **VOL** knob and select the desired mode listed below:
BASS : -10 - +10
TREBLE : -10 - +10
BALANCE : L - R
FADER : F - R
EQ : OFF, FLAT, CLASSICS, POP, ROCK
3. Rotate the **VOL** knob until the desired sound is obtained.

Note: Press **SEL** on the remote control to setup Audio Settings.

PICTURE SETTINGS

1. Press **MENU**. Select **PICTURE** and press **VOL** knob.
2. Rotate **VOL** knob and select the desired mode listed below:
RED : 0 - 50
GREEN : 0 - 50
BLUE : 0 - 50
BRIGHTNESS : 0 - 50
CONTRAST : 0 - 50
SHARPNESS : 0 - 15
SCREEN : 16:9 / 4:3 / FULL
COLOR RESET : YES/NO
3. Rotate the **VOL** knob until the desired sound/feature is obtained.

DUAL SETTINGS

DUAL is a feature that lets user control the external AV device and the head unit. For example, driver can listen to radio while the passenger at the back can watch DVD. This unit supports connection of external AV device such as portable TV through the AUDIO OUT and VIDEO OUT port.

1. Connect the AUDIO OUT and VIDEO OUT port at the back of head unit to the LINE IN of external AV device.
2. Press **MENU**. Select **DUAL** and press **VOL** knob. (*Press DUAL key on remote*)
3. Press **VOL** knob to turn ON DUAL feature.
4. Rotate the **VOL** knob to **KEY**. Press **VOL** knob to choose between:
CURRENT – controls the volume of the main head unit.
DVD – controls the volume of the connected external device.
5. To set the volume, rotate volume knob to **VOL** and press Enter. Rotate volume knob to desired hearing level.

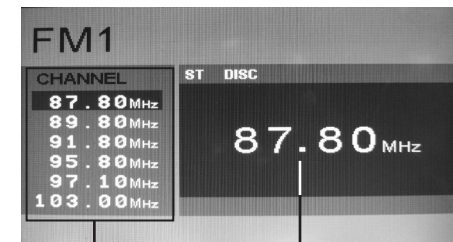
EXPERT SETTINGS

1. Press **MENU**. Select **EXPERT** and press **VOL** knob.
2. Rotate **VOL** knob and select the desired mode listed below
STEREO/MONO : switch between stereo or mono sound.
BEEP : **ALL** – beep sound can be heard while pressing any keys.
2nd – beep sound can be heard only when turning unit off.
OFF – no beep sound.
LOUD : Turn on/off LOUD feature (ON/OFF)
BACKLIGHT : Controls the LCD backlight brightness. (LOW - MID -HIGH)
REAR CAM : Controls the video effect when an optional camera was installed at the rear (NORMAL - MIRROR)
OSD COLOR : Tuner mode screen background color. (Light blue -Dark Blue – Violet)
3. Rotate the **VOL** knob until the desired feature is obtained.

CLOCK SETTINGS

1. Press **MENU**. Select **CLOCK** and press **VOL** knob.
2. To turn on clock display, press **VOL** knob until CLOCK switch to ON.
3. To set clock, rotate **VOL** knob to CLOCK ADJUST. Press **VOL** knob.
4. Rotate **VOL** knob to set hours. Press **VOL** knob to save. Do the same for minutes.

LISTENING TO RADIO



Preset Memory Station 1-6

Currently Tuned Station

Band (BD)

Pressing this key repeatedly will toggle cyclically between each band. FM1---FM2---FM3.

Automatic or Manual tuning (SEEK UP / SEEK DN)

When pressed short, these keys are operated as SEEK tuning mode.

When pressed longer than 1 sec., they are operated as MANUAL tuning mode.

Note: The unit automatically switches back to SEEK tuning mode after 5 sec. if no input was detected during MANUAL tuning mode.

Auto Seek/Preset scan (P.SCN)

Preset Scan (PS) - By pressing shortly, the radio plays each preset station for 5 seconds.

Auto Seek (AS) - By pressing longer than 1 sec., auto seek is activated. The 6 strongest stations are preset and stored in the corresponding preset number.

When Auto Seek operation is finished, the radio executes the preset scan.

Note: This operation is controlled using the remote control.

Storing and Recalling Frequencies

If you press any of the NUMBER (1-6) you can easily store up to six broadcast frequencies for later recall with the touch of a button.

1. Choose a desired BAND.

2. When you find a frequency that you want to store in memory, press a NUMBER (1-6) and hold until the preset number shows and lit in the display.

3. The selected radio station frequency has been stored in memory. The next time you press the same NUMBER (1-6) the radio station frequency is recalled from memory.

Note: Up to 18 FM stations can be stored in the memory.

USING THE RDS FUNCTION

What is RDS?

The RDS (Radio Data System) is a digital information system developed by the EBU (European Broadcast Union). Piggy-backed on normal FM broadcasts, RDS offers a variety of information services and automatic retuning functions for RDS-compatible car stereos. In 1988, RDS became available in the United Kingdom, France, West Germany, Ireland and Sweden.

Test transmissions are being conducted in many other European countries. It is expected that RDS will be available in most western European countries in the near future.

'AF' Function (Alternative Frequencies)

When pressed short, AF switching mode is selected.

The radio checks the signal strength of the AF all the time, when it becomes too weak, the unit detects from the AF signal on which frequencies it must search for a better transmitter.

'TA' Function (Traffic Announcement)

When pressed short, it is activated as TA mode on or off. When TA mode is on and traffic announcement is transmitted.

- When the unit is in CD/MP3 mode, it will switch to radio mode temporarily.

- If the volume level was under the threshold point, it will be raised to the threshold point.

- When TP station is received, TP segment is turned on in LCD display.

'PTY' Function (Program Type)

1. Press the **PTY** button to turn ON Program type.

2. The unit displays the program type with its corresponding number. Keep pressing the **PTY** button to see other program types.

3. Once you see your desired program, simply press the corresponding button number on the unit.

LISTENING TO CD/MP3



Playback

1. Forward or Reverse:

Press and hold ◀◀ or ▶▶ . Unit scans at the rate of (2 - 4 - 8 - 16 - 32) times. To resume normal playback at a desired point, press ▶▶▶ .

2. Skip back or forward to another chapter: Press ◀◀◀ or ▶▶▶ .

Pressing ▶▶▶ skips to the start of the next chapter.

Pressing ◀◀◀ returns to the beginning of current track.

3. Pause / Resume playback: Press ▶▶▶▶ .

4. Stop playback: Press ■ .

Searching for particular track

During playback, all track file names under a folder will be displayed on the screen with their corresponding track number. You can use the navigation keypad on the remote control to access the file.

Tips: To select track 3, press 3 + Enter.

To select 13, press 1+3+Enter.

To select 103, press 1+0+3+Enter.

Repeat tracks

You can choose between repeat playback of a single track or all tracks.

1. Press **RPT** on the remote control during playback.

2. Every time you press this button, the unit switches to the following settings:

Repeat File – Repeat the current playback track.

Repeat All – Repeat all folders and tracks.

Repeat Folder – Repeat all the tracks under the currently played folder.

(Press and hold **RPT** button) .

Random Playback

You can play the tracks in random/shuffle order instead of normal progression.

1. Press **RDM** on the remote control during playback. To turn off, press it again.

Program Playback

You can set which tracks to play according to your desired sequence using the **PROG** function.

1. Press **PROG** button on the remote control.

2. Enter the track number (For CD) or folder and track number (For MP3) besides the memory location. Up to 20 tracks can be stored.

3. When all tracks have been programmed, select **PLAY** and press **ENTER**.

Program playback will start.

4. To clear all program entries, press **PROG** and select "CLEAR ALL".

5. To stop program playback, press **STOP** button twice.

SD/MMC Card Input

1. Press () button to open the front panel.

2. Insert the SD/MMC card into the card slot (23).

3. Attach front panel back to the head unit. Playback starts automatically.

PLAYING DVD/VIDEO CD/MP4

Playback

1. Insert a disc. When the disc offers a menu, the menu is displayed. When a disc already inserted, press **MODE** to switch to disc mode.
2. On DVDs and video CDs with playback control (PBC), menu screens may appear automatically. If this happens, perform the operation described below to start playback.

CAUTION: Make sure that the Video TV system settings is set correctly according to your disc your playing. If you are not sure, leave it set to "**Auto**". Improper setup of TV system might cause the video to stop/skip/pause playing although audio might continue to play. You can setup video TV settings using the **SETUP** feature of the remote control. Refer to "**SETTING UP THE DVD PLAYER**" section.

DVD menu

Press **▲**, **▼**, **◀**, **▶** to select the desired item, then press **Enter**.

Video CD menu

Use the number keys ("0" to "9") to select the desired number, then press **Enter**. The menu screen does not appear when the PBC function is turned off. In this case, press and hold **■** button to turn on PBC feature.

Turning PBC ON/OFF (VCD only)

PBC (Playback Control) is a feature found on VCD 2.0 and SVCD 1.0. PBC allows control of the playback of play items and the possibility of interaction with the user through the remote control or some other input device available. If it's on, the player won't auto start after inserting the disc because it will take time to select program on disc; if it's off, the player will auto playback the program on disc one by one.

1. To turn ON PBC function, press and hold **PBC** on the remote control. To turn OFF, press and hold the button again.

Note:

- *Not all VCD/SVCD disc have PBC functions.*
- *You can also turn PBC on/off on the head unit by press and hold **■** button.*

Stopping Playback

1. Press **■** during playback to stop playback. That position is stored in memory.
2. Press **▶||** to continue. Playback starts from the position at which it was stopped.
3. To permanently stop playback, press **■** twice.

Fast Forward / Fast Reverse

1. During playback, press and hold **◀◀** or **▶▶**. Unit scans at the speed of (2 - 4 - 8 - 16 - 32) times.
2. To resume normal playback at a desired point, press **▶||**.

Note: No sound is played during fast forward / fast reverse.

Finding the Beginning of Tracks

During playback, press **▶▶** or **◀◀**.

▶▶ : Press this to start playback from the beginning of the following chapter or track.

◀◀ : Press this to start playback from the beginning of the current chapter or track.

Press repeatedly to go to previous track.

Pause Playback

During playback, press **▶||**. Press again to resume playback.

Repeat Playback

FOR VCD

1. Press **RPT** on the remote control during playback.
2. Every time you press this button, the unit switches to the following settings:

Repeat Track – Repeat the current playback track.

Repeat Off – Turn repeat off.

Note: *PBC feature in VCD disc needs to be STOP in order to use Repeat playback.*

FOR DVD

You can choose between repeat playback of a title or chapter.

1. Press **RPT** on the remote control during playback.
2. Every time you press this button, the unit switches to the following settings:
Repeat Title – Repeat the current playback title. (Press and hold **RPT** button)
Repeat Chapter – Repeat the current playback chapter.
Repeat Off – Turn repeat off.

A-B Repeat Playback

This feature allows you to loop playback a section of the movie starting from Point A to B.

1. Press the **▶II** button to play the movie.
2. Once you have located the section you wish to playback on loop repeat, press **A-B** button. You will see “Rep-A” on the screen.
3. Let the movie play on until you have reached the end of the section you wish to watch on continuous loop. Once you have reached this point, press the **A-B** button again. “Rep-A-B” will appear on your screen. Playback will now start from Point A–B.
4. To stop A-B repeat playback, press **A-B** button once more until “Rep-A-B” disappear and normal playback resumes.

Random Playback

You can play the tracks/chapters in random/shuffle order.

1. Press **RDM** on the remote control during playback. To turn off, press it again.

Specifying Title/Chapter

CD and VCD

Press a NUMBER corresponding to a desired track number during playback. The number is displayed and playback starts

To select track 3, press 3 + Enter.

To select 13, press 1+3+Enter.

To select 103, press 1+0+3+Enter.

Note: Make sure PBC is turn off when VCD is inserted. Refer to “Turning PBC ON/OFF section” on how to turn off PBC

DVD

Press a NUMBER corresponding to a desired chapter number of the currently played TITLE during playback. The number is displayed and playback starts.

To select track 3, press 3 + Enter.

To select 13, press 1+3+Enter.

To select 103, press 1+0+3+Enter.

Changing audio language during playback (Multi-audio)

DVDs can provide audio playback with different languages and different systems (Dolby Digital, DTS etc.). With DVDs featuring multi-audio recordings, you can switch between languages/audio systems during playback.

VCD can provide different audio languages usually divided into left and right channels.

1. To choose different audio, simply press **Audio** on the remote control repeatedly during playback.

Note:

- *With some DVDs, switching between languages/audio systems may only be possible using a menu display.*
- *You can also switch between languages/audio systems using SET-UP MENU.*

Changing the subtitle language during playback (Multi-subtitle) – (DVD only)

With DVDs featuring multi-subtitle recordings, you can switch between subtitle languages during playback.

1. Press **Sub-T** on the remote control during playback. Press repeatedly until the supported desired subtitle appears.

Note:

- *With some DVDs, switching between subtitles may only be possible using a menu display.*
- *You can also switch between subtitles using SET-UP MENU.*

Changing the viewing angle during playback (Multi-angle) – (DVD only)

With DVDs featuring multi-angle (scenes shot from multiple angles) recordings, you can switch among viewing angles during play-back.

1. Press **Angle** on the remote control during playback of a scene.

Slow motion playback

This feature lets you slow down playback.

1. Press **Slow** on the remote control during playback.
2. Pressing it repeatedly will switch you to the following steps: 1/32 - 1/16 - 1/8 - 1/4 - 1/2 (VCD) and 1/2 - 1/4 - 1/8 - 1/16 - (DVD).

Note:

- *To resume normal playback, press ►|| .*
- *There is no sound during slow motion playback.*
- *With some disc, slow motion may be unclear during slow motion playback.*

Zooming in During Playback

You can zoom in into the picture during playback.

1. Press and hold **ZOOM** on the remote control during playback.
2. Every time you press and hold this button, the unit will zoom 1 - 2 - 3 - 4 - 1/2 - 1/3 - 1/4 times and OFF.

Displaying information (OSD)

During playback, you can see all DVD disc information and current play settings. Display will show related playback time, elapse time, title number, chapter number, angle, audio settings, subtitle and bitrate information.

1. Press and hold **OSD** on the remote control once. Unit will display the play time and the disc elapse time.
2. Press and hold it once more and all other settings information will be displayed.

Program Playback

You can set which tracks to play according to your desired sequence using the PROG function.

VCD

1. Press **PROG** button on the remote control.
2. Enter the track number besides the memory location. Up to 20 locations can be stored.
3. When all tracks have been programmed, select **PLAY** and press **ENTER**. Program playback will start.
4. To clear all program entries, press **PROG** and select "CLEAR ALL".
5. To stop program playback, press **STOP** button twice.

DVD

1. Press **PROG** button on the remote control.
2. Enter the title number first follow by the chapter number besides the memory location. Up to 20 locations can be stored.
3. When all tracks have been programmed, select **PLAY** and press **ENTER**. Program playback will start.
4. To clear all program entries, press **PROG** and select "CLEAR ALL".
5. To stop program playback, press **STOP** button twice.

SETTING UP THE DVD PLAYER

You can flexibly customize the unit to suit your preference. You can set the language and other video and audio settings so when playback starts it will always use your preferred settings.

Important:

1. Load any disc into the unit before you can access the setup.
2. Press **SETUP** on the remote control.

Settings	Category	Options
Language	OSD LANG	Select preferred options appear on screen
	Subtitle	
	Audio	
	DVD Disc	
	Version	View Version
Display	TV Display	Normal/PS, Normal/LB, Wide
	TV Type	Auto, NTSC, PAL
	Angle Mark	On, Off
	Screen Saver	On, Off
Audio	Digital Output	Off, BTS, LPCM
	Downmix	LT/RT, Stereo
	Dual Mono	Stereo, L-mono, R-mono, Mix-mono
	Dynamic	Off, 1/8, 1/4, 3/8, 1/2, 5/8, 3/4, 7/8 Full
	LPCM Output	48KHz, 96KHz
Parental	Change	Change password
	Parental	1. Kid Safe 2. G 3. PG 4. PG-13,
		5. PG-R 6. R 7. NC-17 8. Adult
Default	Restore	

Setting Rating Password

1. Press **Setup** on the remote control.
2. Using Navigation keys select *Parental* and press **ENTER**.
3. Scroll down to *Change* and press **ENTER**.
4. Enter new 4 digit password and press **ENTER**.

Note:

- *The default password is "8888".*

TECHNICAL SPECIFICATIONS

CD/MP3 PLAYER SECTION

Signal to Noise Ratio	> 60 dB
Channel Separation	> 50 dB (1kHz)
Frequency Response	20 Hz - 20 kHz

TUNER (FM)

Frequency Range	87.5-108 MHz
Channel Step	50 kHz
Intermediate Frequency	10.7 MHz
Sensitivity	2.8 μ V
Stereo Separation	30 dB
Signal to Noise Ratio	50 dB

LINE-OUT

Output	5V max
Impedance	10k Ohm

GENERAL

Power Supply	12V DC (10.8-15.6V allowable)
Speaker Impedance	4 or 8 Ohm
Output power	35W x 4CH

Note: Specification and the design are subject to possible modification without notice due to improvements.



Instructions on environment protection

Do not dispose of this product in the usual household garbage at the end of its lifecycle; hand it over at a collection point for the recycling of electrical and electronic appliances. The symbol on the product, the instructions for use or the packing will inform about the methods for disposal.

The materials are recyclable as mentioned in this marking. By recycling, material recycling or other forms of re-utilization of old appliances, you are making an important contribution to protect our environment.

Please inquire at the community administration for the authorized disposal location.

ALL RIGHTS RESERVED
COPY RIGHT DENVER ELECTRONICS A/S



www.denver-electronics.com