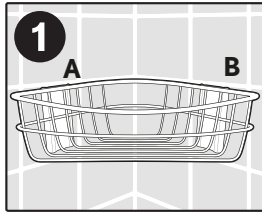


IMPORTANT: FOLLOW instructions carefully!
 SAVE INSTRUCTIONS for clean removal in the future or visit www.commandstrips.ca.

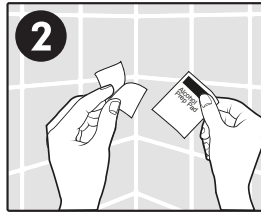
To Attach Corner Caddy:

Prep:



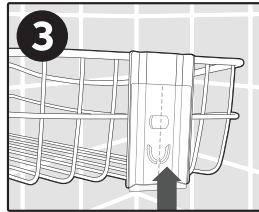
Select Location

If possible, choose a location where strips are not over grout lines.
 Important: Allow space above and below caddy for removal.



Important: Clean & Dry Surface

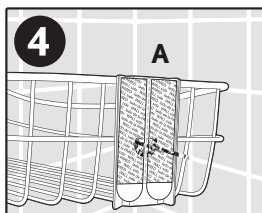
Thoroughly clean surface with isopropyl rubbing alcohol to remove all soap, shampoo and cleaner residue. Use a clean, dry cloth to wipe surface completely dry. **DO NOT** use household cleaners. **Keep alcohol pad out of reach of children and avoid eye contact.**



Apply Mounting Bases

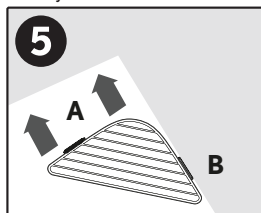
Slide plastic mounting base onto back of caddy from the bottom up until it snaps into place for both sides A & B.

Mount:



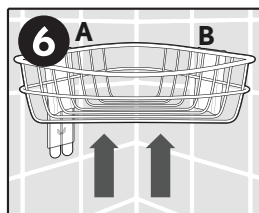
Separate & Apply Strips

Separate strips. Remove red liners. Apply 2 strips to mounting base A only. Remove black liners on side A of the caddy.



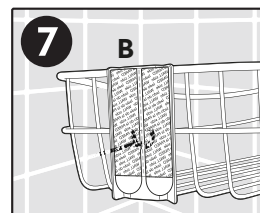
Slide & Press

Position side B of the caddy against the wall so that side A is not touching the other wall. Holding side B against the wall, slide the caddy sideways into place so that side A touches the wall and press firmly against surface for 5 seconds.



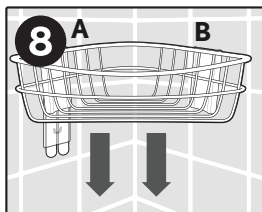
Remove Caddy

Slide caddy up to remove from mounting base.



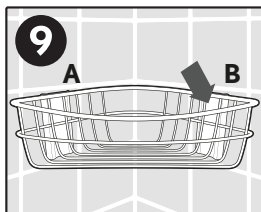
Separate & Apply Strips

Separate strips. Remove red liners. Apply 2 strips to mounting base B. Remove black liners on side B of the caddy.



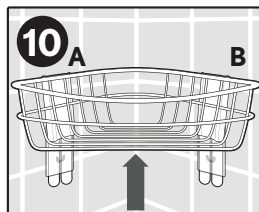
Attach Caddy

While keeping side B away from the wall, slide caddy back onto mounting base A until it snaps into place.



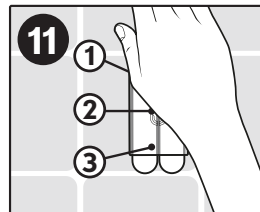
Position & Press

Press against the surface for 5 seconds.



Remove Caddy

Slide caddy up to remove from mounting bases.



Press Firmly

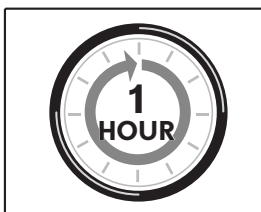
Use your palm to **FIRMLY** press all 3 areas of both bases for 30 seconds each.

CAUTION: Caddy must be removed for time specified in step 12 to prevent adhesive failure.

Wait:

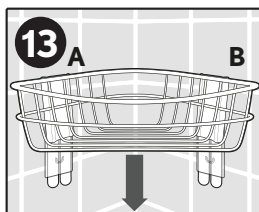


or



If mounting in a shower or tub area: **USE SHOWER AT LEAST ONCE AND THEN WAIT OVERNIGHT** to allow adhesive to build strength before attaching corner caddy.

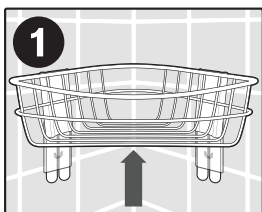
If mounting outside of shower or tub area: **WAIT 1 HOUR** to allow adhesive to build strength before attaching corner caddy.



Attach Caddy

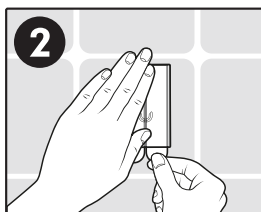
Slide caddy back onto both mounting bases until it snaps into place.

To Remove:



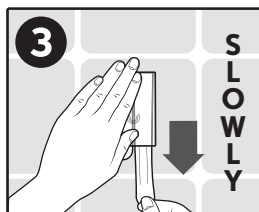
Remove Caddy

Slide caddy up to remove from mounting bases.



Hold Base Lightly

To prevent base from snapping your fingers, lightly hold mounting base - **DO NOT** press base against wall.



Remove Strip

NEVER pull strip out at an angle. Strip could break or damage surface. **SLOWLY** slide tab **STRAIGHT DOWN AGAINST WALL** stretching strip at least 15 inches (38 cm) until mounting base releases from wall. Remove one strip at a time. Repeat steps with additional strips.